



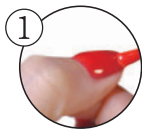
Weekly Gel®



Apply like regular nail polish
and just peel it off when done

Easy to follow steps,
even for
first time users.

2STEP



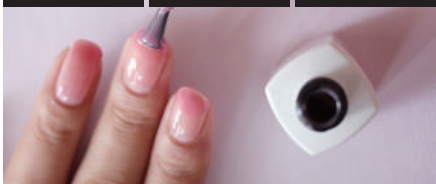
APPLY
COLOR



CURE
30
SEC
(When you use
HOMEI Compact
Gel Light30)

ALL-IN-ONE GEL POLISH

BASE GEL COLOR GEL TOP GEL



PEELABLE GEL POLISH



7DAYS WEAR

► PUT LONG LASTING SHINE

Durability of nail color may vary in different individuals.

THIS PRODUCT REQUIRES A LED OR UV LIGHT.

This product isn't nail polish.

Easy to use
like regular
nail polish.



~TIPS AND TRICKS FOR LONG LASTING GEL NAILS~

Remove oil content on nails and prepare to apply gel polish. No sanding required. ※1



① Wash and dry your hands
thoroughly to remove any oil.



After pushing back excess
cuticles, fix the length and
shape of your nails with nail files.



For long lasting gel nails, we recommend using nail cleanser with a
cotton puff and removing oil and dirt from your nails.

Once this pre-application
treatment is ready,
do not touch your nails.

~HOW TO USE~

Homei Weekly Gel incorporates the three functions of base coating,
coloring, and top coating in one product. So easy!



Shake the bottle gently before
using.



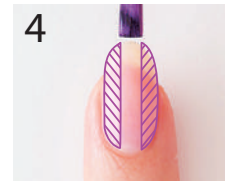
Open the bottle, stir the inside with the
brush attached with the cap, and remove
excess gel polish from the brush by sliding it
up the inside of the bottle's opening from
base to tip.



Apply a thin layer each time.

Place a small dab of gel polish on the tip of
your nail first (1) then swipe the brush in a
straight line from the base of your nail
above cuticle to the tip of your nail (2).

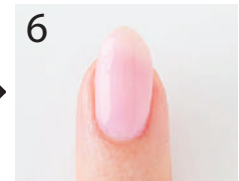
To avoid chips,
apply a small
amount of gel
polish on the
edge of tip of
your nail too.



Return the brush to the base of your nail. Move
the brush upwards along the left and right curve
of your nail until the entire side is coated in gel
polish. Wipe gel polish protruding from the edge
before it using a gel nail light to harden.



Harden your nail with a gel nail
light (With HOMEI Compact
Gel Light30, it requires only 30
seconds)



Repeat this process with a
second or third thin layer then
you're all set.

~HOW TO REMOVE GEL~

No gel nail polish remover required! Easy to peel off! ※2



Use your nail tip to peel off the
gel polish. From the base of your
nail (cuticle side), gently peel a
bit as you create a small gap
between your nail and gel polish.



Hold the peeled part and gently
peel it off towards your nail tip.

POINT

Hard to peel off? Please try this!

1 Apply acetone nail polish removers on a
cotton puff and put it on your nails for a
while, until the remover thoroughly
penetrates your nail. Then use a stick such
as a cuticle pusher and peel it off towards
your nail tip.
2 Apply cuticle oil into the small gap
between your nail and gel polish, and
gently peel it off.

※1 Avoid sanding your nails before applying gel polish. It may make the gel coating difficult to peel off.
※2 7days wear. Put long lasting shine. Durability of nail color may vary in different individuals.

\ Quick and Wide – So convenient! /

HOMEI COMPACT GEL LIGHT



CURE 30 SEC

No batteries required.

Just connect to your own AC adapter or computer!

USB LED LIGHT ※3

- ♥ Slim and compact – easy to store.
- ♥ Wide shape, smoothly hardens your nails.
- ♥ Great for pedicures too!

Removes oil and dirt on your nails for long lasting gel nails. ※4

HOMEI NAIL CLEANSER



HOW TO USE (Please wash your hands before using them)



① Add appropriate amount of cleanser to a cotton puff.

② Wipe the entire nail with the cotton puff. Don't touch your nails until they're dry.

Scent of sweet bubble soap.



③ Apply gel nail or nail polish. → Cure 30 Sec.

For those who prefer to keep gel nails for a long time.

Washing hands and removing oil from your nails, will increase adhesion between your nails and gel polish. After that, please apply a thin layer of gel polish.



Homei Nail Cleanser that also functions as oil remover is highly recommended.

★ Please see the details inside, on page 3.

For those who prefer to peel gel nails off in a short time.

If the layer is too thin, adhesion level of your nails and gel polish may be very strong and may make the gel coating difficult to peel off. Please apply double or triple layers and create relatively thick gel coating.

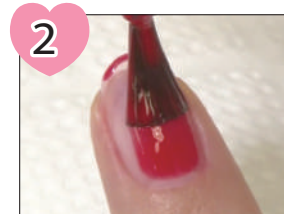
Hard to peel off? Please try this!

- 1 Apply acetone nail polish removers on a cotton puff and put it on your nails for a while, until the remover thoroughly penetrates your nail. Then use a stick such as a cuticle pusher and peel it off towards your nail tip.
- 2 Apply cuticle oil into the small gap between your nail and gel polish, and gently peel it off.

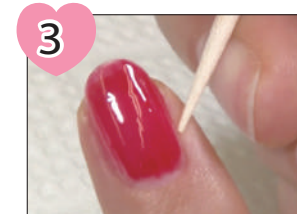
Other tips for long-lasting gel nails.



Apply a small amount of gel polish on the edge of the tip of your nail too. It will prevent your gel polish from getting chipped.



Apply multiple thin layers. After applying a thin layer, use the gel nail light to harden your nails and repeat the process 2-3 times.



Avoid applying gel polish on skin because the application may easily come off and eventually cause the whole gel polish to become chipped. Wipe gel polish protruding from the edge before hardening it.

WARNING

- Do not use the product if you have a gel allergy or your nails are in poor condition. -Do not apply HOMEI weekly gel on damaged nails.
- Test product on one nail before using the product on your other nails. (UV or LED lights with a wavelength of 250 to 400 nm should be used for curing.)
- Gel should last about 10 days before peeling (source: company analysis), but results may vary on individual users.
- If you find any abnormalities on your nails during or after use, stop using the product and seek medical attention.
- Avoid skin and eye contact. If the product comes in contact with your skin, wash with soap and water.
- If product gets in eyes, rinse with water for 15 minutes. If swallowed, seek medical attention immediately.
- Store the product in a safe place out of reach of children. -Do not use this product for anything other than its intended use.
- Store the bottle upright in a dark place.
- Be sure to close the cap firmly after use. Avoid leaving the cap off for an extended period of time. -Keep bottle away from UV or LED lights.
- Remove gel on the cap before putting it back on the bottle.
- It is recommended that you use the product within 6 months after opening.

This product isn't an ordinary nail polish; it is a gel polish that is cured with the help of light. Once the product is exposed to light, the curing reaction (photopolymerization) will start, causing the product to become stickier and harder. Make sure you read and understand the instructions before use.

※3 AC adapter is not included. Please purchase it or use the AC adapter (Output Voltage: 4.8V-5.2V/1A) you already have. (Please use the USB cord in the package to connect the product to your computer, etc.)

※4 Removing oil and dirt from your nails will increase adhesion between your nails and gel polish. Persistence of gel nails depends on individual.